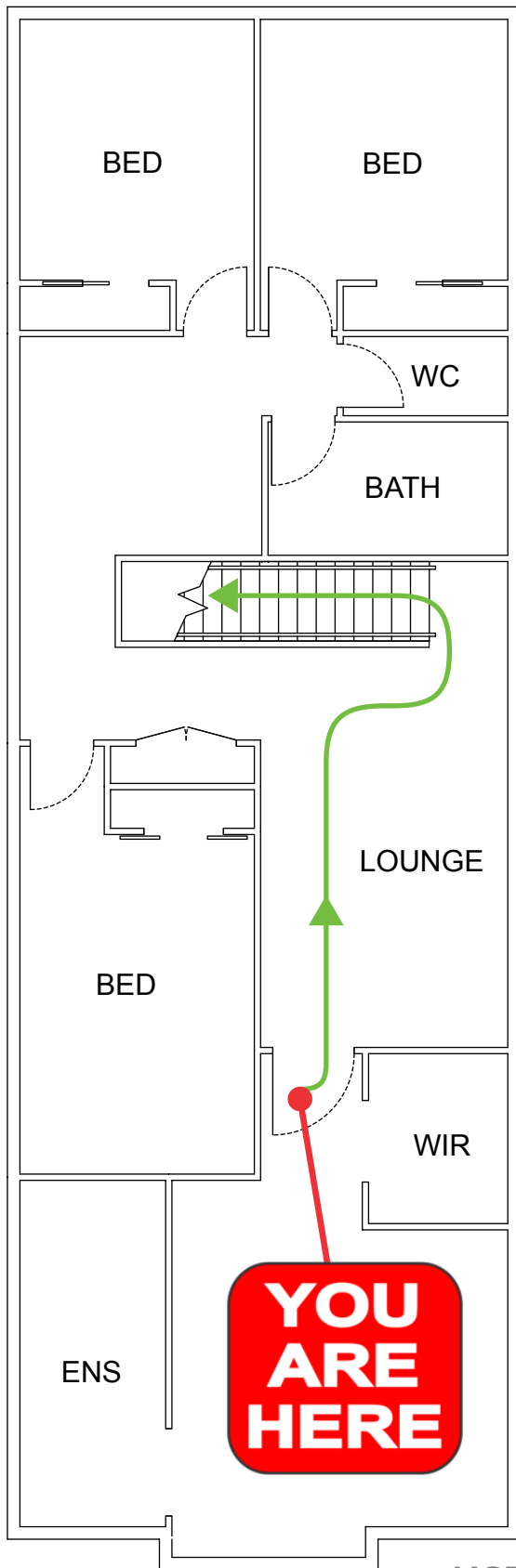


EVACUATION DIAGRAM

43A NAUTILUS WAY, KINGSCLIFF NSW 2487

FIRST FLOOR



NOT TO SCALE

LEGEND



IN AN EMERGENCY



emergencyplus

Save the app that
could save your life



triplezero.gov.au

EMERGENCY EVACUATION PROCEDURE IN CASE OF

FIRE OR OTHER EMERGENCY

- If you see SMOKE, FLAMES or hear the SMOKE ALARM, alert other occupants immediately.
- If safe, close any windows and doors to confine the fire.
- Leave to the nearest **EXIT** and proceed to the assembly area.
- TELEPHONE **000** and notify the Emergency Services.
- Do not re-enter the building until you are told it is safe to do so by the Emergency Services.



**AUSTRALIAN
FIRE PROTECTION**

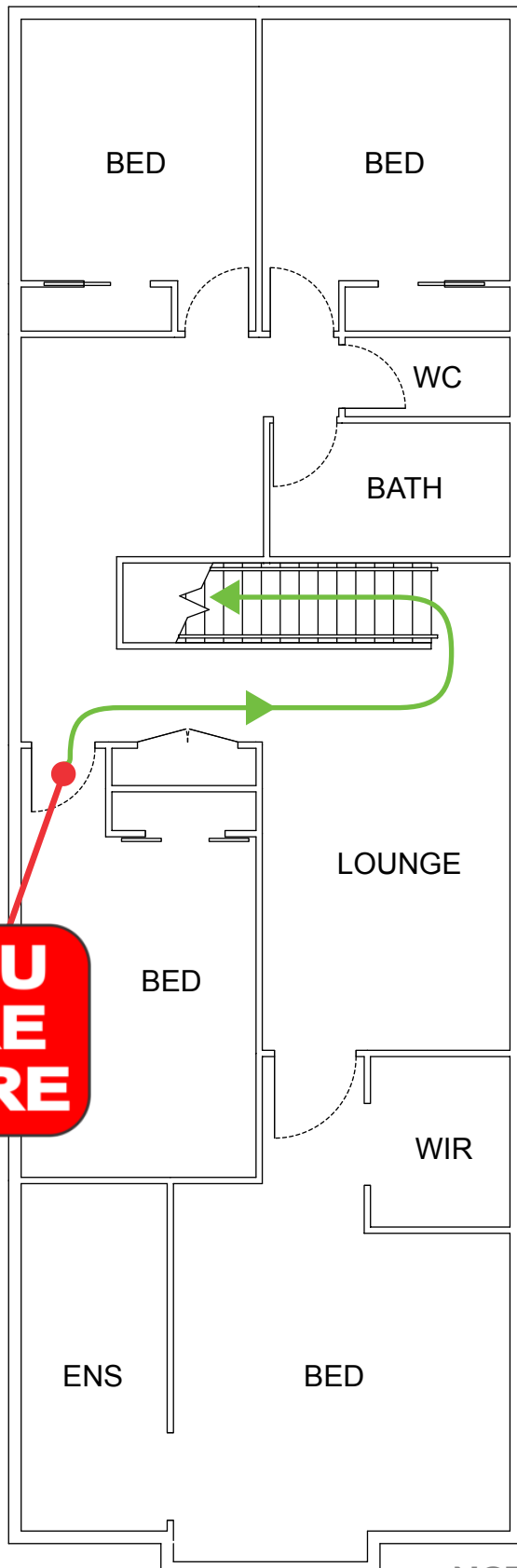
Austfirepro.com.au - 1300 80 FIRE

Preparing People For Emergencies

EVACUATION DIAGRAM

43A NAUTILUS WAY, KINGSCLIFF NSW 2487

FIRST FLOOR



NOT TO SCALE

IN AN EMERGENCY



EMERGENCY



emergencyplus

Save the app that
could save your life



triplezero.gov.au

EMERGENCY EVACUATION
PROCEDURE IN CASE OF

FIRE OR OTHER EMERGENCY

- If you see SMOKE, FLAMES or hear the SMOKE ALARM, alert other occupants immediately.
- If safe, close any windows and doors to confine the fire.
- Leave to the nearest **EXIT** and proceed to the assembly area.
- TELEPHONE **000** and notify the Emergency Services.
- Do not re-enter the building until you are told it is safe to do so by the Emergency Services.



**AUSTRALIAN
FIRE PROTECTION**

Austfirepro.com.au - 1300 80 FIRE

Preparing People For Emergencies

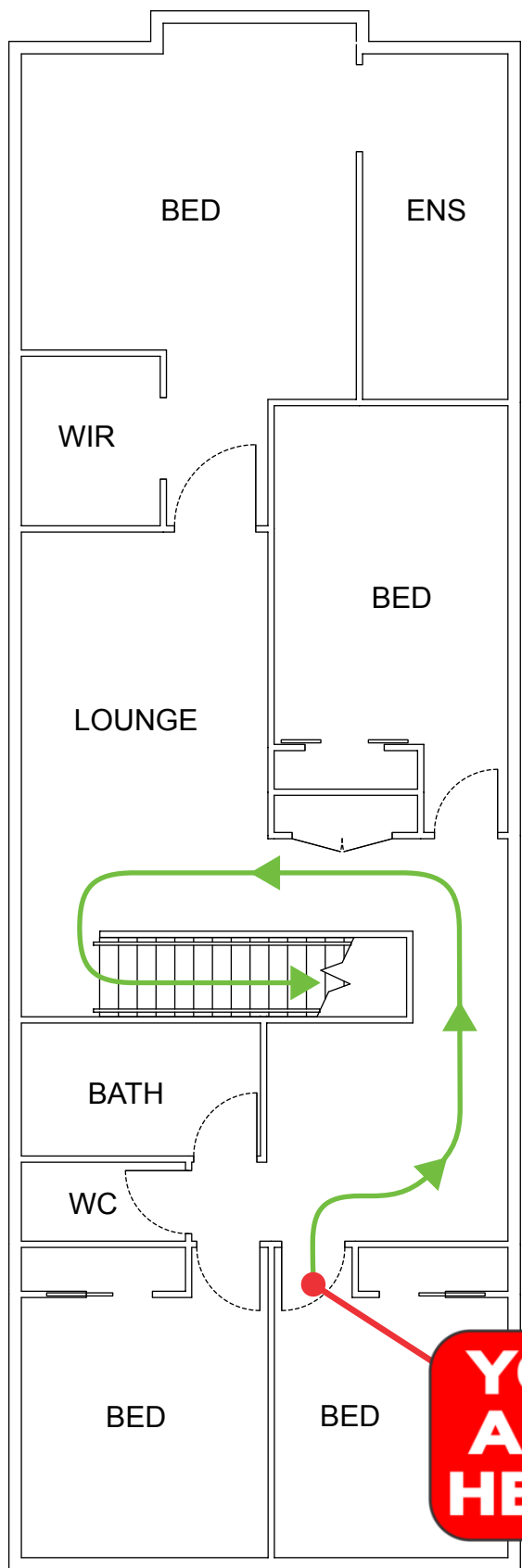
LEGEND



EVACUATION DIAGRAM

43A NAUTILUS WAY, KINGSCLIFF NSW 2487

FIRST FLOOR



NOT TO SCALE

IN AN EMERGENCY



emergencyplus

Save the app that
could save your life



triplezero.gov.au

EMERGENCY EVACUATION
PROCEDURE IN CASE OF

FIRE OR OTHER EMERGENCY

- If you see SMOKE, FLAMES or hear the SMOKE ALARM, alert other occupants immediately.
- If safe, close any windows and doors to confine the fire.
- Leave to the nearest **EXIT** and proceed to the assembly area.
- TELEPHONE **000** and notify the Emergency Services.
- Do not re-enter the building until you are told it is safe to do so by the Emergency Services.



**AUSTRALIAN
FIRE PROTECTION**

Austfirepro.com.au - 1300 80 FIRE

Preparing People For Emergencies

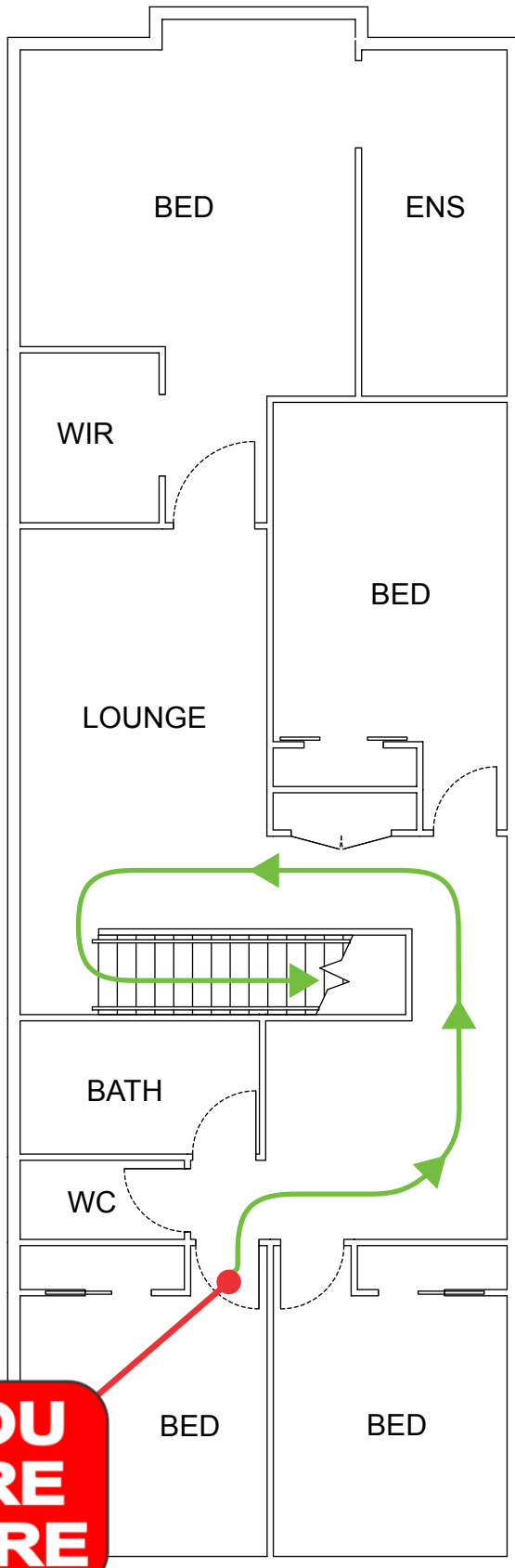
LEGEND



EVACUATION DIAGRAM

43A NAUTILUS WAY, KINGSCLIFF NSW 2487

FIRST FLOOR



NOT TO SCALE

IN AN EMERGENCY



emergencyplus

Save the app that
could save your life



triplezero.gov.au

EMERGENCY EVACUATION
PROCEDURE IN CASE OF

FIRE OR OTHER EMERGENCY

- If you see SMOKE, FLAMES or hear the SMOKE ALARM, alert other occupants immediately.
- If safe, close any windows and doors to confine the fire.
- Leave to the nearest **EXIT** and proceed to the assembly area.
- TELEPHONE **000** and notify the Emergency Services.
- Do not re-enter the building until you are told it is safe to do so by the Emergency Services.



**AUSTRALIAN
FIRE PROTECTION**

Austfirepro.com.au - 1300 80 FIRE

Preparing People For Emergencies

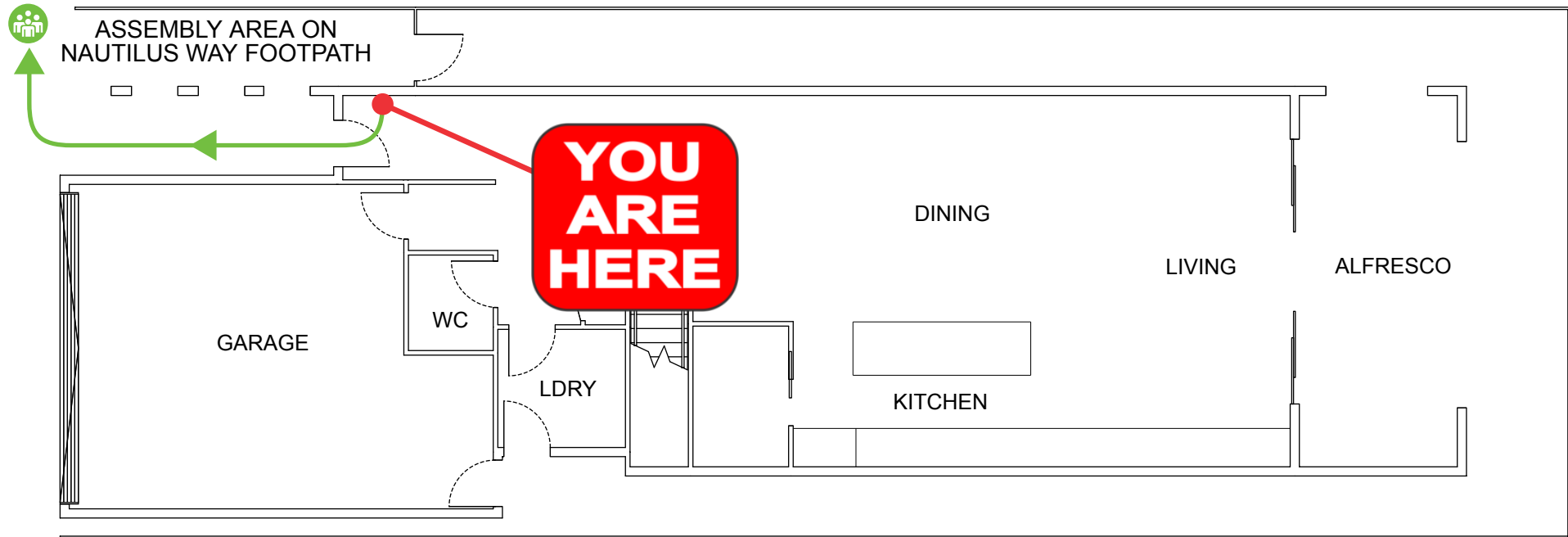
LEGEND



EVACUATION DIAGRAM

43A NAUTILUS WAY, KINGSCLIFF NSW 2487

GROUND FLOOR



NOT TO SCALE

IN AN EMERGENCY



EMERGENCY EVACUATION PROCEDURE IN CASE OF FIRE OR OTHER EMERGENCY

- If you see SMOKE, FLAMES or hear the SMOKE ALARM, alert other occupants immediately.
- If safe, close any windows and doors to confine the fire.
- Leave to the nearest **EXIT** and proceed to the assembly area.
- TELEPHONE **000** and notify the Emergency Services.
- Do not re-enter the building until you are told it is safe to do so by the Emergency Services.

LEGEND



Assembly Area



Evacuation Path

