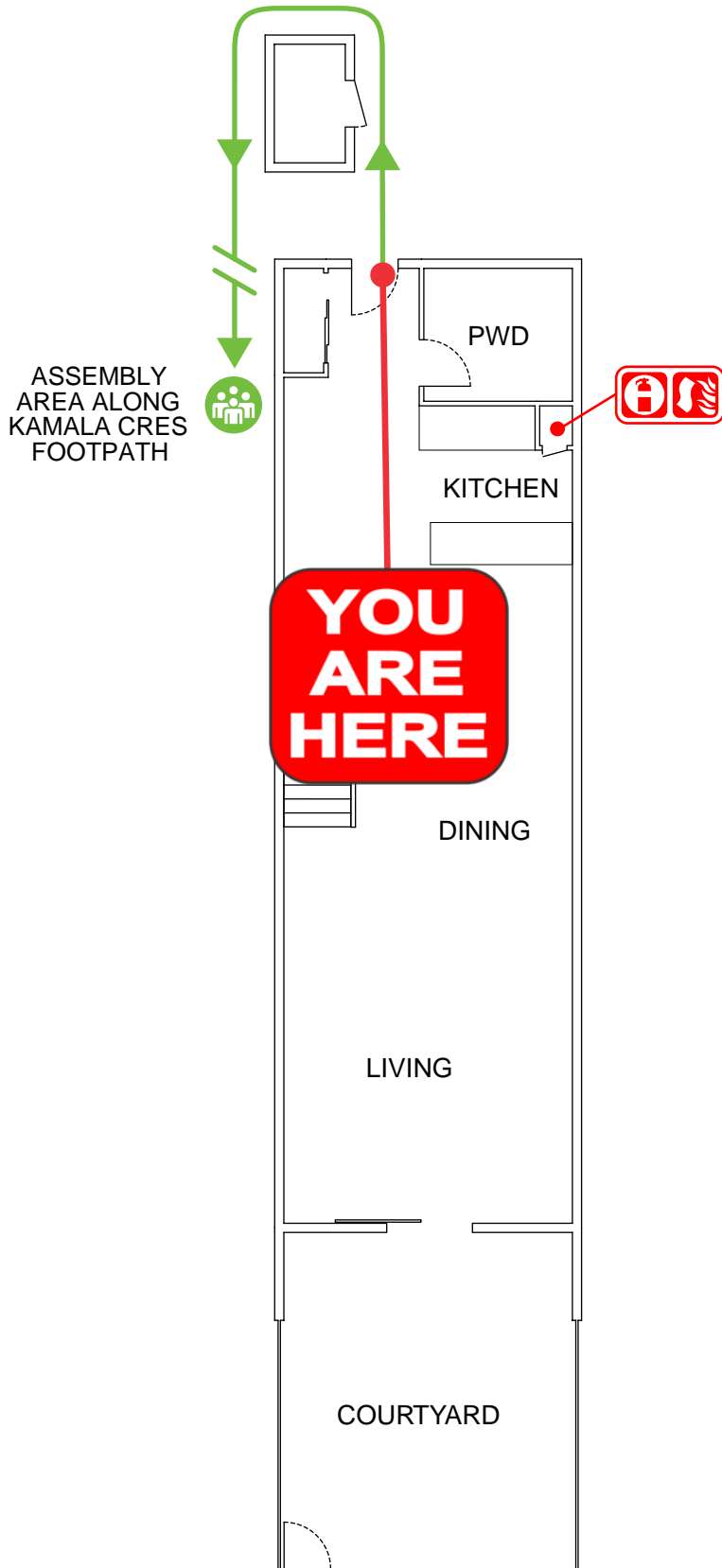


EVACUATION DIAGRAM

9/2-8 BEECH LANE, CASUARINA NSW 2487

GROUND FLOOR



IN AN EMERGENCY



EMERGENCY



emergencyplus

Save the app that
could save your life



triplezero.gov.au

EMERGENCY EVACUATION PROCEDURE IN CASE OF

FIRE OR OTHER EMERGENCY

- If you see SMOKE, FLAMES or hear the SMOKE ALARM, alert other occupants immediately.
- If safe, close any windows and doors to confine the fire.
- Leave to the nearest **EXIT** and proceed to the assembly area.
- TELEPHONE **000** and notify the Emergency Services.
- Do not re-enter the building until you are told it is safe to do so by the Emergency Services.



**AUSTRALIAN
FIRE PROTECTION**

Austfirepro.com.au - 1300 80 FIRE

Preparing People For Emergencies

LEGEND



Dry Chemical
Powder



Fire
Blanket



Assembly
Area

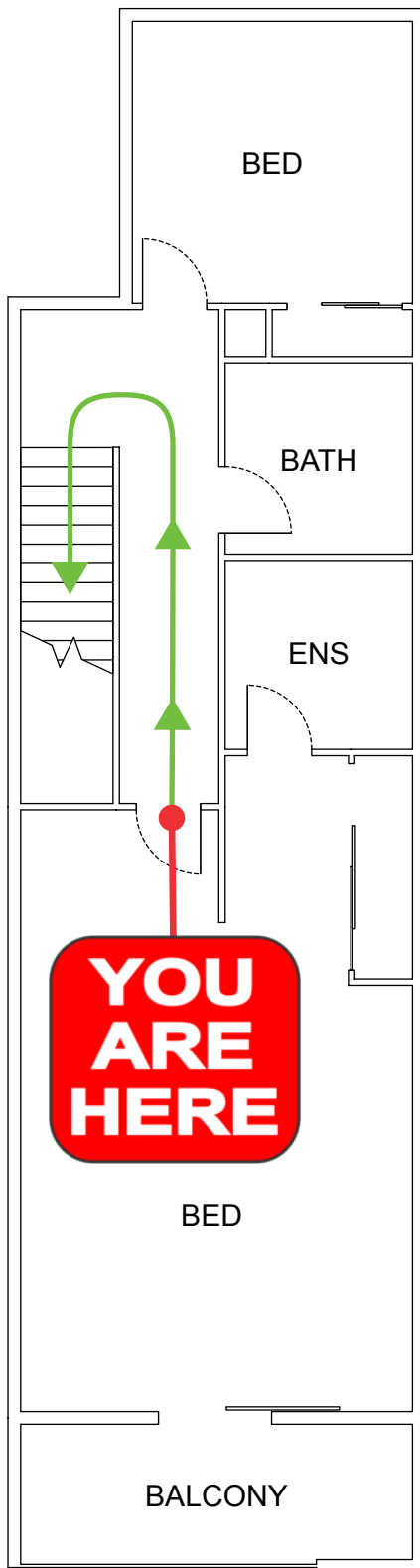


Evacuation
Path

EVACUATION DIAGRAM

9/2-8 BEECH LANE, CASUARINA NSW 2487

FIRST FLOOR



IN AN EMERGENCY



emergencyplus

Save the app that
could save your life



triplezero.gov.au

EMERGENCY EVACUATION PROCEDURE IN CASE OF

FIRE OR OTHER EMERGENCY

- If you see SMOKE, FLAMES or hear the SMOKE ALARM, alert other occupants immediately.
- If safe, close any windows and doors to confine the fire.
- Leave to the nearest **EXIT** and proceed to the assembly area.
- TELEPHONE **000** and notify the Emergency Services.
- Do not re-enter the building until you are told it is safe to do so by the Emergency Services.



**AUSTRALIAN
FIRE PROTECTION**

Austfirepro.com.au - 1300 80 FIRE

Preparing People For Emergencies

LEGEND

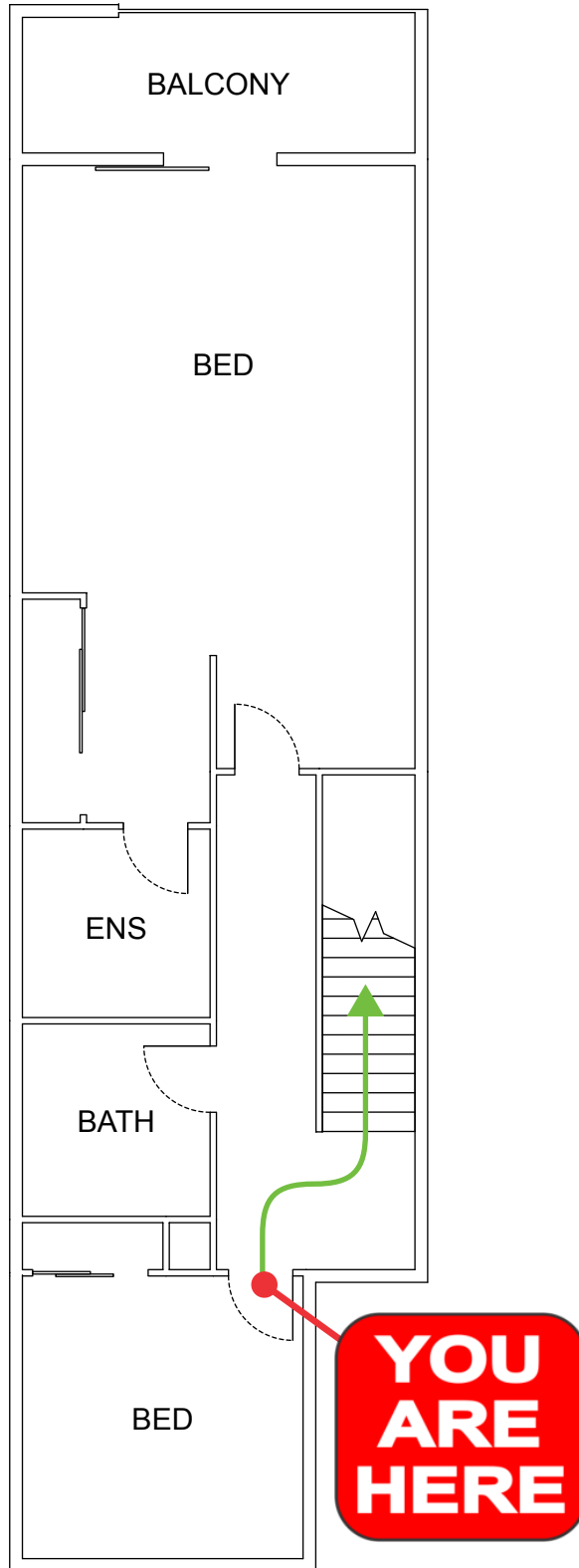


Evacuation
Path

EVACUATION DIAGRAM

9/2-8 BEECH LANE, CASUARINA NSW 2487

FIRST FLOOR



IN AN EMERGENCY



emergencyplus

Save the app that
could save your life



triplezero.gov.au

EMERGENCY EVACUATION PROCEDURE IN CASE OF

FIRE OR OTHER EMERGENCY

- If you see SMOKE, FLAMES or hear the SMOKE ALARM, alert other occupants immediately.
- If safe, close any windows and doors to confine the fire.
- Leave to the nearest **EXIT** and proceed to the assembly area.
- TELEPHONE **000** and notify the Emergency Services.
- Do not re-enter the building until you are told it is safe to do so by the Emergency Services.



**AUSTRALIAN
FIRE PROTECTION**

Austfirepro.com.au - 1300 80 FIRE

Preparing People For Emergencies

LEGEND



Evacuation
Path