

EVACUATION DIAGRAM

22 SUTHERLAND STREET, KINGSCLIFF NSW 2487



EMERGENCY EVACUATION PROCEDURE IN CASE OF FIRE OR OTHER EMERGENCY



emergencyplus

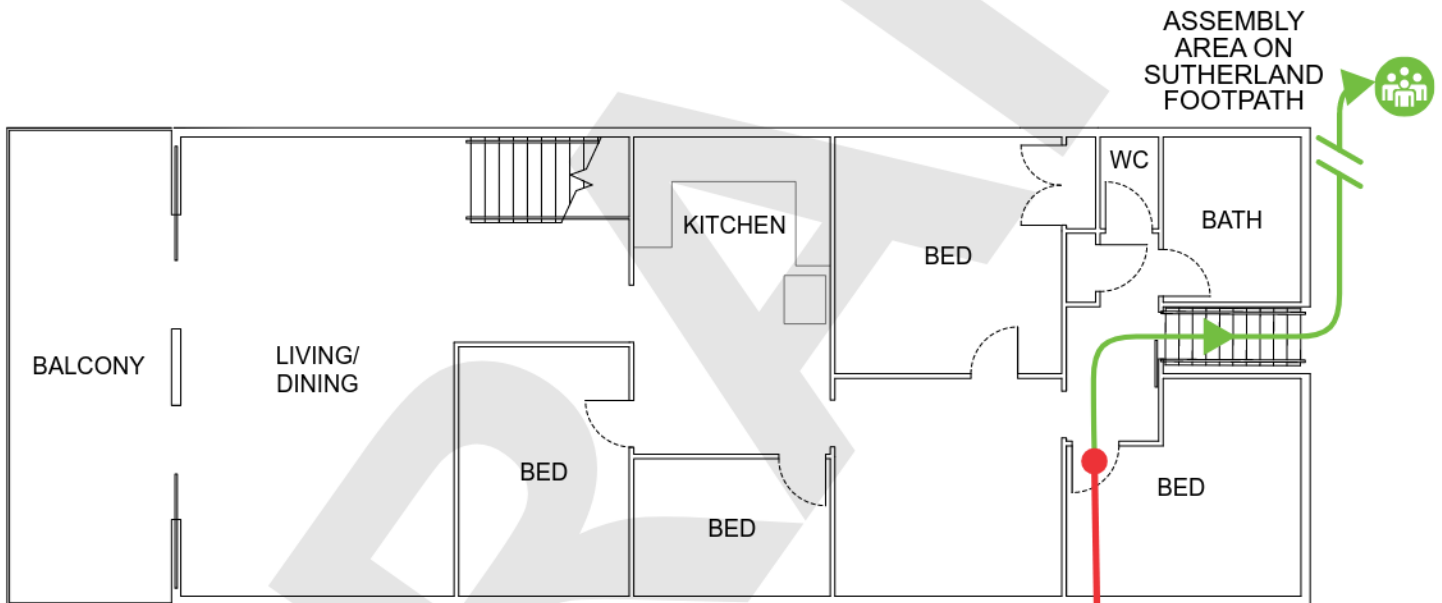
Save the app that could save your life



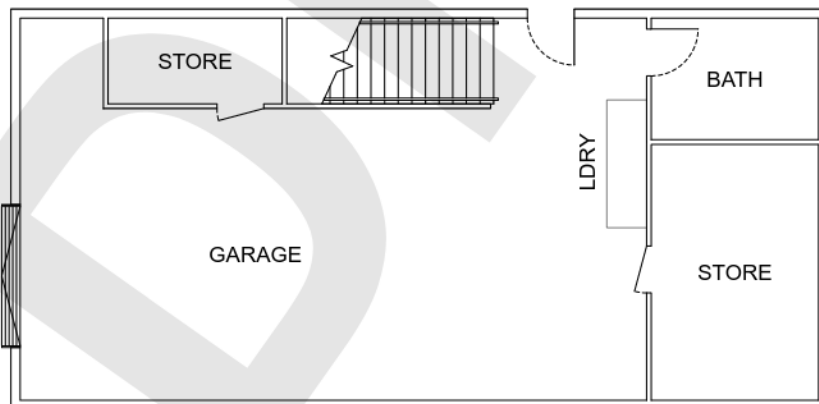
triplezero.gov.au

- If you see SMOKE, FLAMES or hear the SMOKE ALARM, alert other occupants immediately.
- If safe, close any windows and doors to confine the fire.
- Leave to the nearest **EXIT** and proceed to the assembly area.
- TELEPHONE **000** and notify the Emergency Services.
- Do not re-enter the building until you are told it is safe to do so by the Emergency Services.

FIRST FLOOR



GROUND FLOOR



**YOU
ARE
HERE**

LEGEND



Assembly Area



Evacuation Path



**AUSTRALIAN
FIRE PROTECTION**

Austfirepro.com.au - 1300 80 FIRE

Preparing People For Emergencies

EVACUATION DIAGRAM

22 SUTHERLAND STREET, KINGSCLIFF NSW 2487



EMERGENCY EVACUATION PROCEDURE IN CASE OF FIRE OR OTHER EMERGENCY



emergencyplus

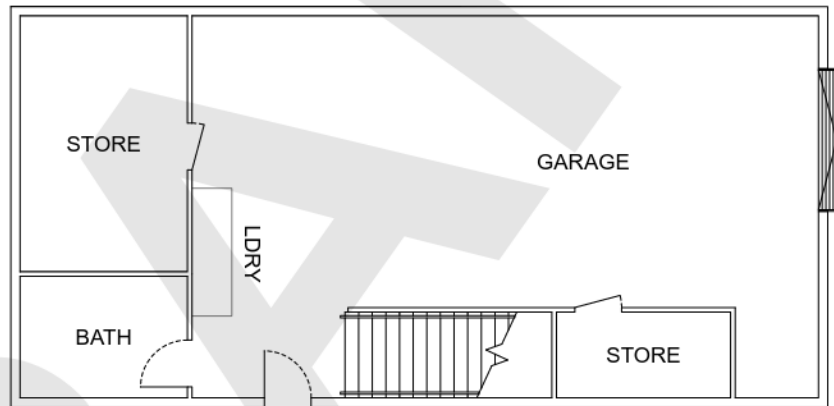
Save the app that could save your life



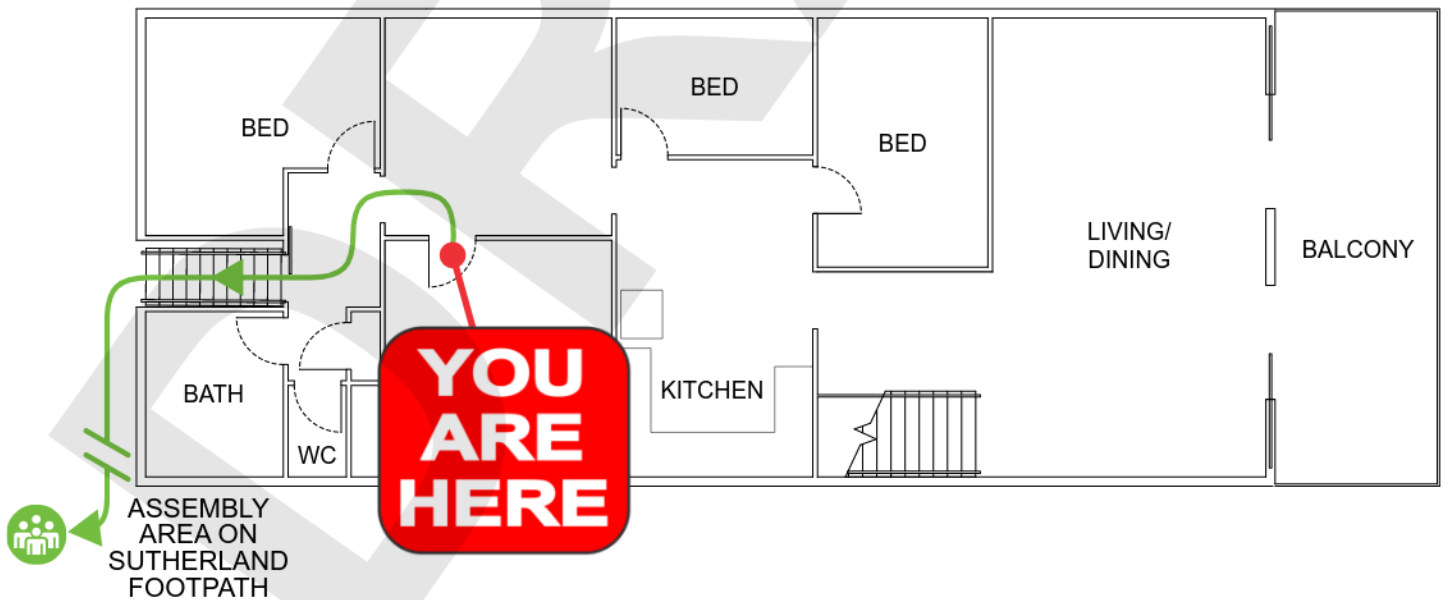
triplezero.gov.au

- If you see SMOKE, FLAMES or hear the SMOKE ALARM, alert other occupants immediately.
- If safe, close any windows and doors to confine the fire.
- Leave to the nearest **EXIT** and proceed to the assembly area.
- TELEPHONE **000** and notify the Emergency Services.
- Do not re-enter the building until you are told it is safe to do so by the Emergency Services.

GROUND FLOOR



FIRST FLOOR



LEGEND



Assembly Area



Evacuation Path



**AUSTRALIAN
FIRE PROTECTION**

Austfirepro.com.au - 1300 80 FIRE

Preparing People For Emergencies

EVACUATION DIAGRAM

22 SUTHERLAND STREET, KINGSCLIFF NSW 2487



EMERGENCY EVACUATION PROCEDURE IN CASE OF FIRE OR OTHER EMERGENCY



emergencyplus

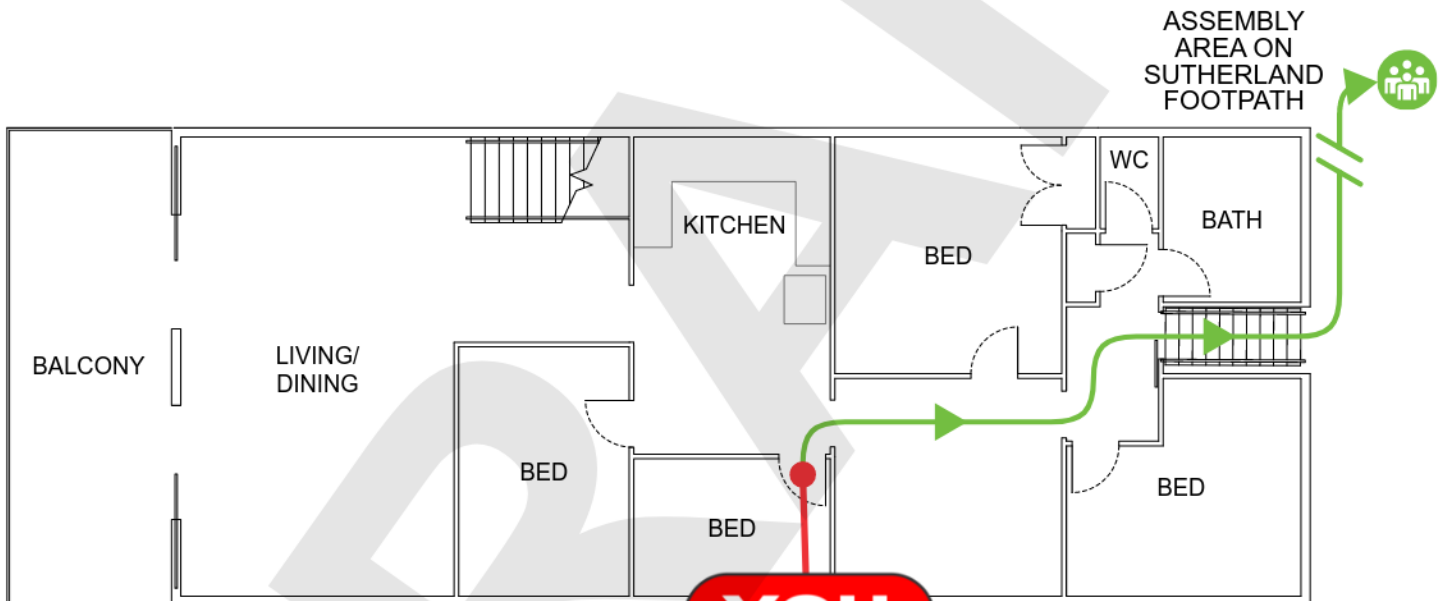
Save the app that could save your life



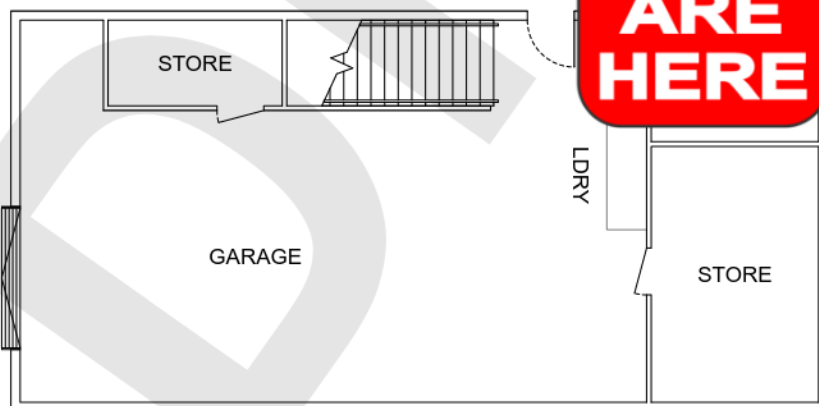
triplezero.gov.au

- If you see SMOKE, FLAMES or hear the SMOKE ALARM, alert other occupants immediately.
- If safe, close any windows and doors to confine the fire.
- Leave to the nearest **EXIT** and proceed to the assembly area.
- TELEPHONE **000** and notify the Emergency Services.
- Do not re-enter the building until you are told it is safe to do so by the Emergency Services.

FIRST FLOOR



GROUND FLOOR



**YOU
ARE
HERE**

LEGEND



Assembly Area



Evacuation Path



**AUSTRALIAN
FIRE PROTECTION**

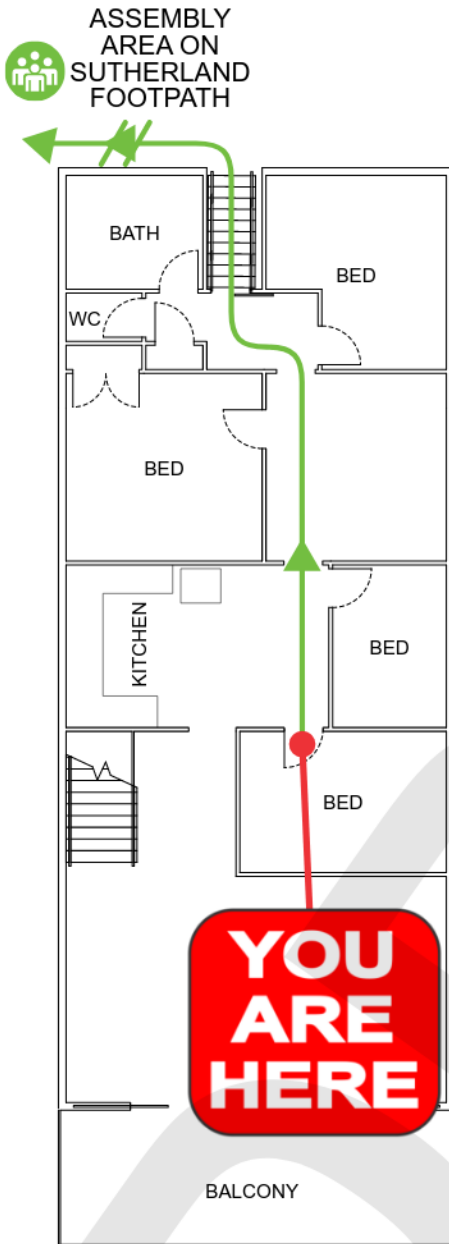
Austfirepro.com.au - 1300 80 FIRE

Preparing People For Emergencies

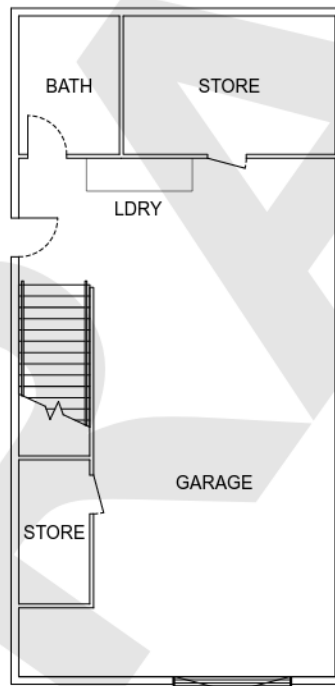
EVACUATION DIAGRAM

22 SUTHERLAND STREET, KINGSCLIFF NSW 2487

FIRST FLOOR



GROUND FLOOR



IN AN EMERGENCY



emergencyplus

Save the app that could save your life



triplezero.gov.au

EMERGENCY EVACUATION PROCEDURE IN CASE OF

FIRE OR OTHER EMERGENCY

- If you see SMOKE, FLAMES or hear the SMOKE ALARM, alert other occupants immediately.
- If safe, close any windows and doors to confine the fire.
- Leave to the nearest **EXIT** and proceed to the assembly area.
- TELEPHONE **000** and notify the Emergency Services.
- Do not re-enter the building until you are told it is safe to do so by the Emergency Services.



AUSTRALIAN
FIRE PROTECTION

Austfirepro.com.au - 1300 80 FIRE

Preparing People For Emergencies

LEGEND



Assembly Area



Evacuation Path

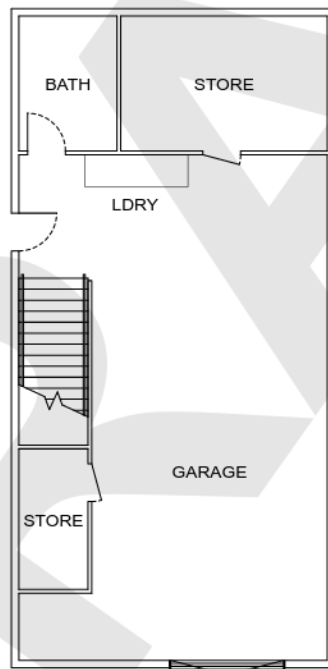
EVACUATION DIAGRAM

22 SUTHERLAND STREET, KINGSCLIFF NSW 2487

FIRST FLOOR



GROUND FLOOR



IN AN EMERGENCY



emergencyplus

Save the app that could save your life



triplezero.gov.au

EMERGENCY EVACUATION PROCEDURE IN CASE OF

FIRE OR OTHER EMERGENCY

- If you see **SMOKE**, **FLAMES** or hear the **SMOKE ALARM**, alert other occupants immediately.
- If safe, close any windows and doors to confine the fire.
- Leave to the nearest **EXIT** and proceed to the assembly area.
- **TELEPHONE 000** and notify the Emergency Services.
- Do not re-enter the building until you are told it is safe to do so by the Emergency Services.



AUSTRALIAN
FIRE PROTECTION

Austfirepro.com.au - 1300 80 FIRE

Preparing People For Emergencies

LEGEND



Assembly Area



Evacuation Path