

EVACUATION DIAGRAM

252 MARINE PARADE, KINGSCLIFF NSW, 2487



EMERGENCY EVACUATION PROCEDURE IN CASE OF FIRE OR OTHER EMERGENCY



emergencyplus

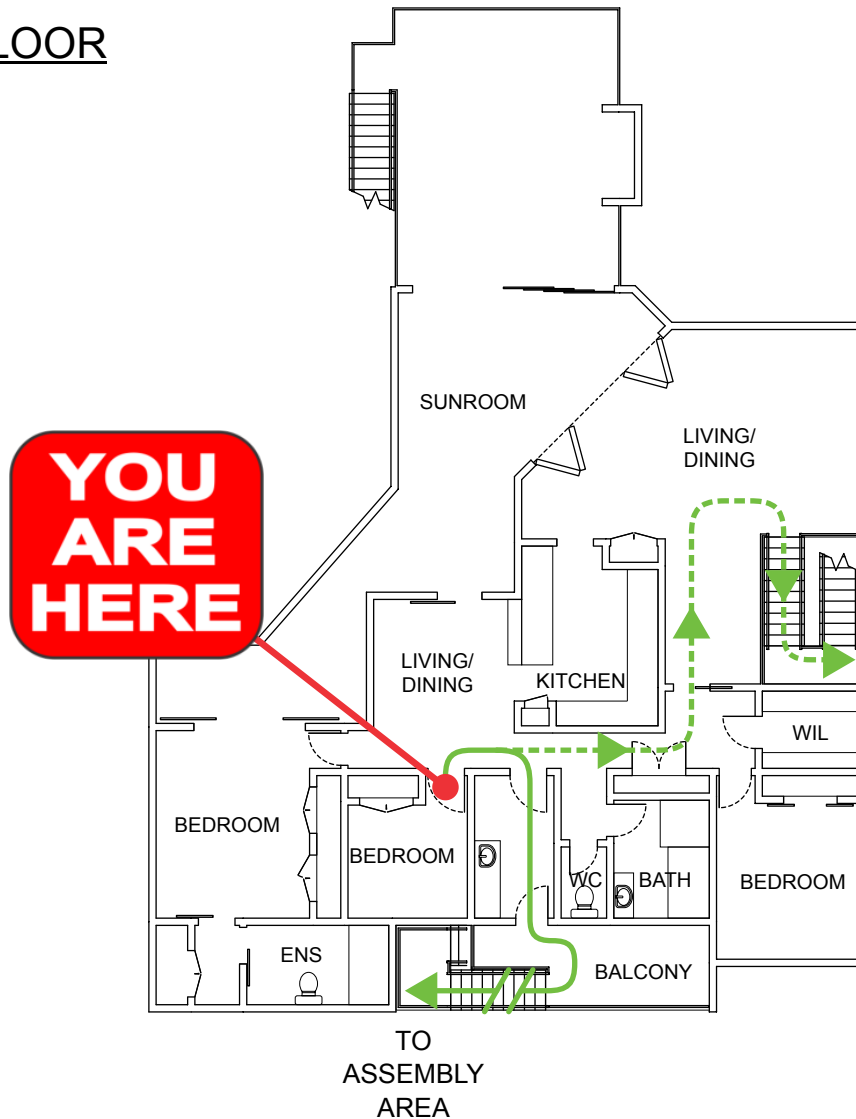
Save the app that
could save your life



triplezero.gov.au

- If you see SMOKE, FLAMES or hear the SMOKE ALARM, alert other occupants immediately.
- If safe, close any windows and doors to confine the fire.
- Leave to the nearest **EXIT** and proceed to the assembly area.
- TELEPHONE **000** and notify the Emergency Services.
- Do not re-enter the building until you are told it is safe to do so by the Emergency Services.

FIRST FLOOR



LEGEND



**AUSTRALIAN
FIRE PROTECTION**

Austfirepro.com.au - 1300 80 FIRE

Preparing People For Emergencies

EVACUATION DIAGRAM

252 MARINE PARADE, KINGSCLIFF NSW, 2487



EMERGENCY EVACUATION PROCEDURE IN CASE OF FIRE OR OTHER EMERGENCY



emergencyplus

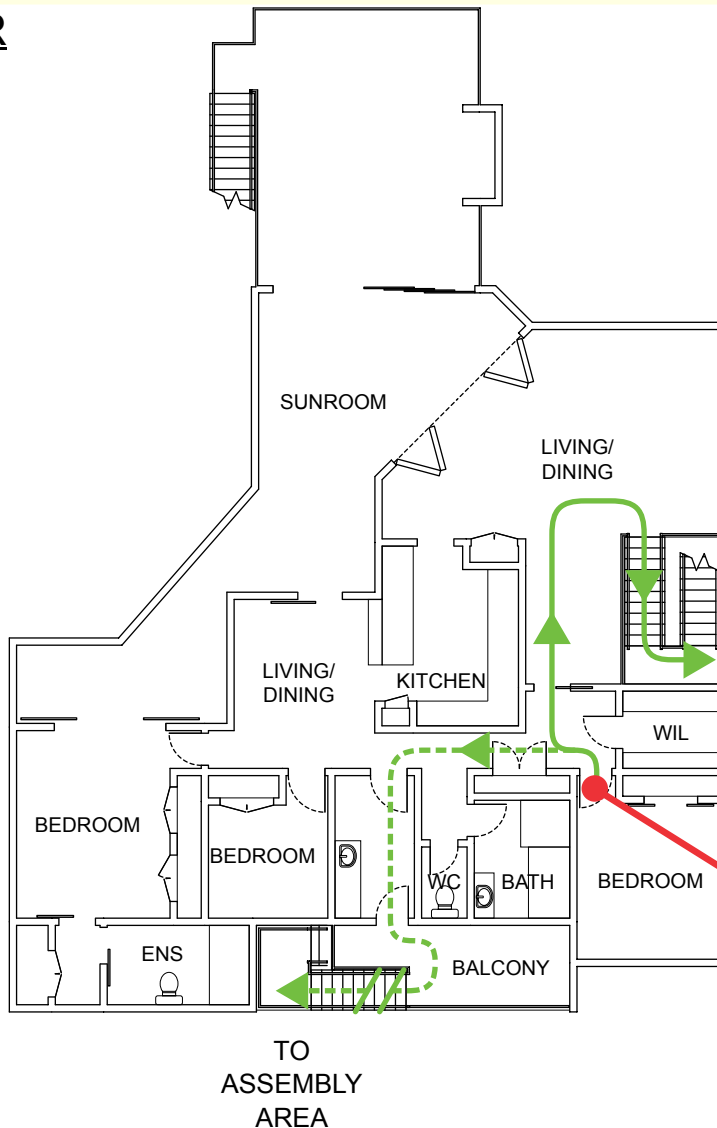
Save the app that
could save your life



triplezero.gov.au

- If you see SMOKE, FLAMES or hear the SMOKE ALARM, alert other occupants immediately.
- If safe, close any windows and doors to confine the fire.
- Leave to the nearest **EXIT** and proceed to the assembly area.
- TELEPHONE **000** and notify the Emergency Services.
- Do not re-enter the building until you are told it is safe to do so by the Emergency Services.

FIRST FLOOR



LEGEND



**AUSTRALIAN
FIRE PROTECTION**

Austfirepro.com.au - 1300 80 FIRE

Preparing People For Emergencies

EVACUATION DIAGRAM

252 MARINE PARADE, KINGSCLIFF NSW, 2487



EMERGENCY EVACUATION PROCEDURE IN CASE OF FIRE OR OTHER EMERGENCY



emergencyplus

Save the app that
could save your life



triplezero.gov.au

- If you see SMOKE, FLAMES or hear the SMOKE ALARM, alert other occupants immediately.
- If safe, close any windows and doors to confine the fire.
- Leave to the nearest **EXIT** and proceed to the assembly area.
- TELEPHONE **000** and notify the Emergency Services.
- Do not re-enter the building until you are told it is safe to do so by the Emergency Services.

FIRST FLOOR



LEGEND



Alternate
Evacuation Path



Evacuation
Path



**AUSTRALIAN
FIRE PROTECTION**

Austfirepro.com.au - 1300 80 FIRE

Preparing People For Emergencies

EVACUATION DIAGRAM

252 MARINE PARADE, KINGSCLIFF NSW, 2487



EMERGENCY EVACUATION PROCEDURE IN CASE OF FIRE OR OTHER EMERGENCY



emergencyplus

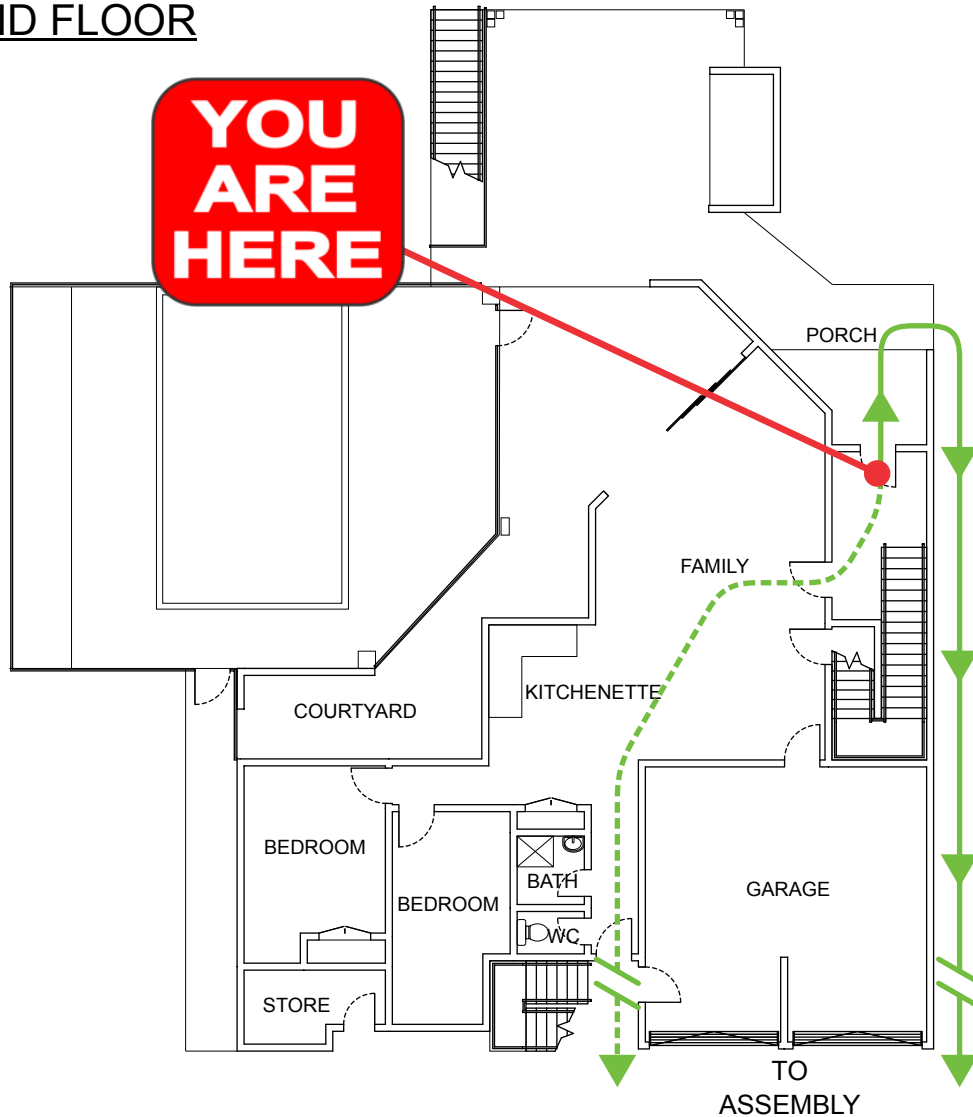
Save the app that
could save your life



triplezero.gov.au

- If you see SMOKE, FLAMES or hear the SMOKE ALARM, alert other occupants immediately.
- If safe, close any windows and doors to confine the fire.
- Leave to the nearest **EXIT** and proceed to the assembly area.
- TELEPHONE **000** and notify the Emergency Services.
- Do not re-enter the building until you are told it is safe to do so by the Emergency Services.

GROUND FLOOR



LEGEND



Alternate
Evacuation Path



Evacuation
Path



**AUSTRALIAN
FIRE PROTECTION**

Austfirepro.com.au - 1300 80 FIRE

Preparing People For Emergencies

EVACUATION DIAGRAM

252 MARINE PARADE KINGSCLIFF, NSW 2487
252 MARINE PARADE, KINGSCLIFF NSW, 2487



EMERGENCY EVACUATION PROCEDURE IN CASE OF FIRE OR OTHER EMERGENCY



emergencyplus

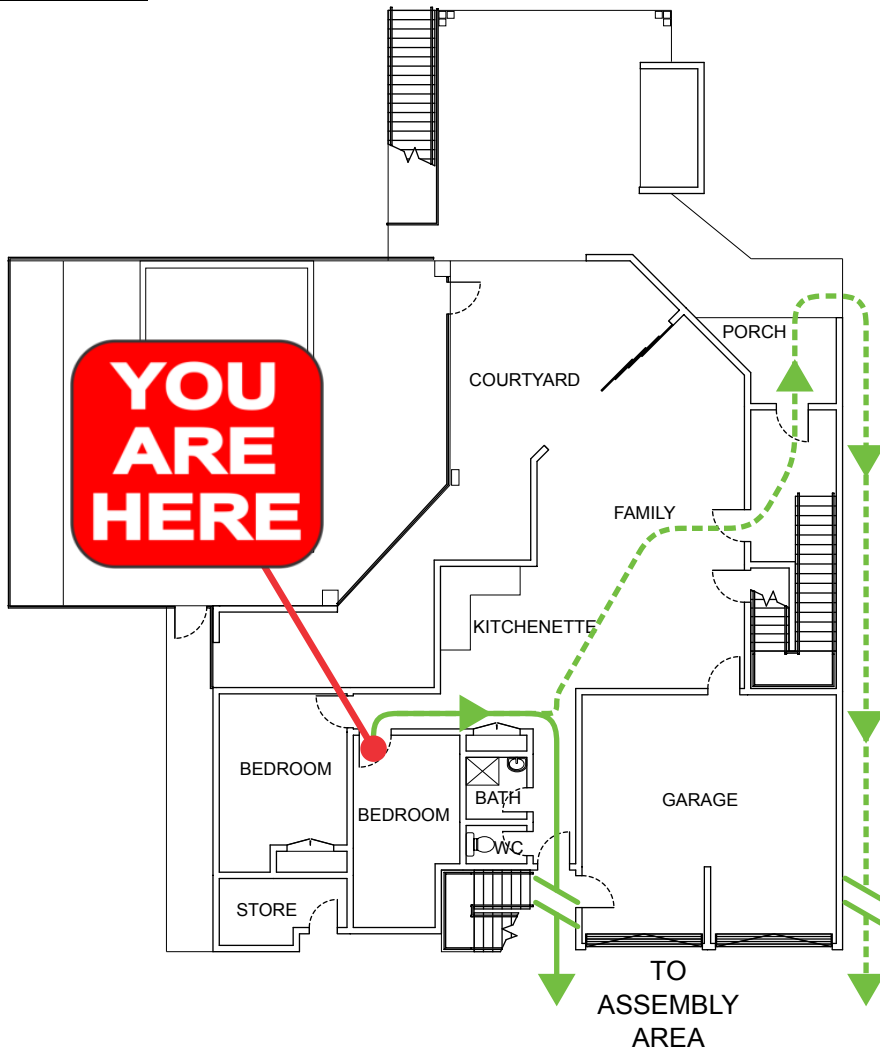
Save the app that
could save your life



triplezero.gov.au

- If you see SMOKE, FLAMES or hear the SMOKE ALARM, alert other occupants immediately.
- If safe, close any windows and doors to confine the fire.
- Leave to the nearest **EXIT** and proceed to the assembly area.
- TELEPHONE **000** and notify the Emergency Services.
- Do not re-enter the building until you are told it is safe to do so by the Emergency Services.

GROUND FLOOR



LEGEND

■ → Alternate Evacuation Path

→ Evacuation Path



**AUSTRALIAN
FIRE PROTECTION**

Austfirepro.com.au - 1300 80 FIRE

Preparing People For Emergencies

EVACUATION DIAGRAM

252 MARINE PARADE, KINGSCLIFF NSW, 2487



EMERGENCY EVACUATION PROCEDURE IN CASE OF FIRE OR OTHER EMERGENCY



emergencyplus

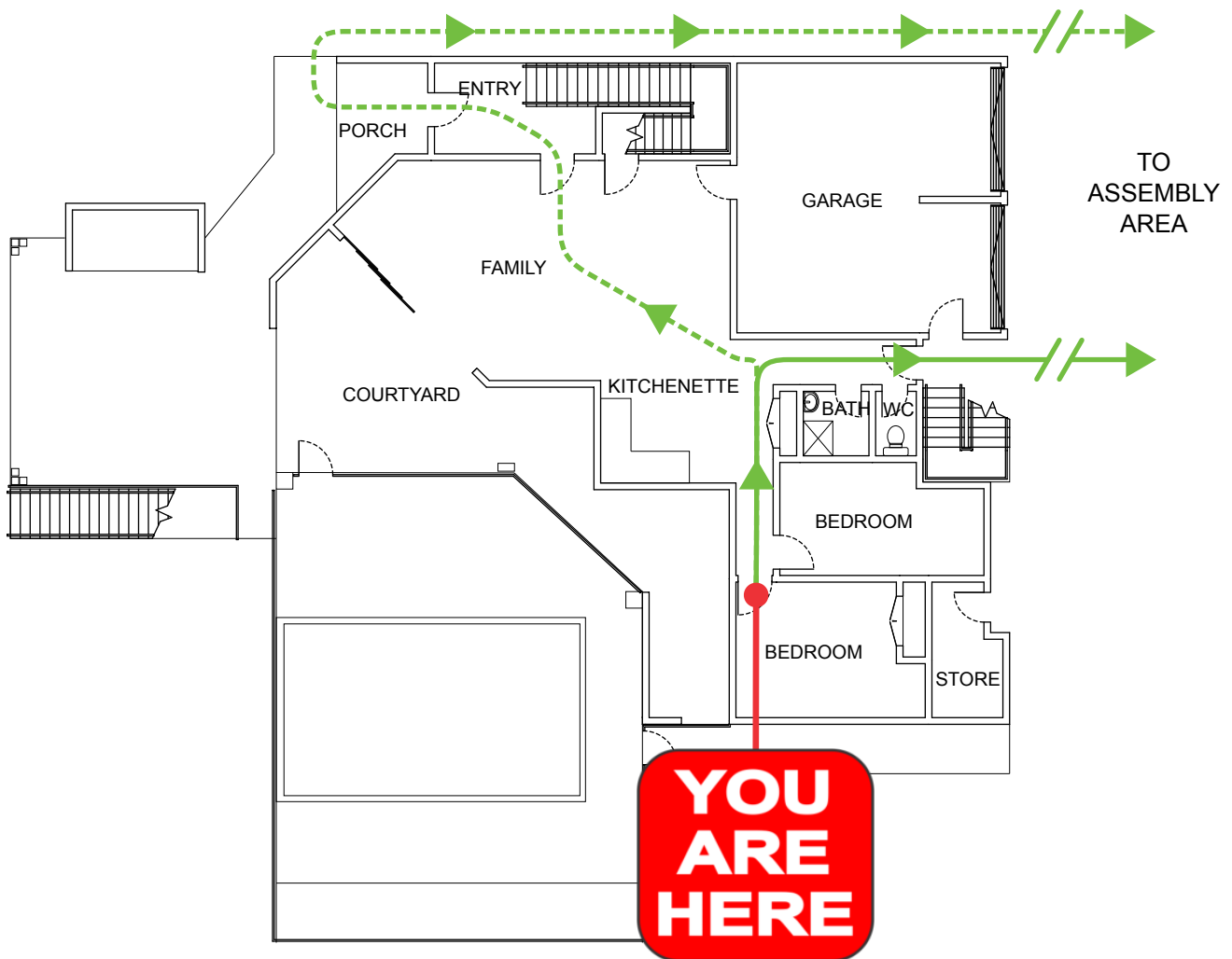
Save the app that
could save your life



triplezero.gov.au

- If you see SMOKE, FLAMES or hear the SMOKE ALARM, alert other occupants immediately.
- If safe, close any windows and doors to confine the fire.
- Leave to the nearest **EXIT** and proceed to the assembly area.
- TELEPHONE **000** and notify the Emergency Services.
- Do not re-enter the building until you are told it is safe to do so by the Emergency Services.

GROUND FLOOR



LEGEND



Alternate
Evacuation Path



Evacuation
Path



**AUSTRALIAN
FIRE PROTECTION**

Austfirepro.com.au - 1300 80 FIRE

Preparing People For Emergencies